

Way Forward:

- 1) Investigate extent of wet rot and determine localised removal of fabric to contain
- 2) Investigate source of water causing damp in chimney stacks and elsewhere
- 3) LBC Application to remove unauthorised/modern walls and any works associated with waterproofing the building and removal of rot

KEY

—

Unauthorised?

.....

Historic Structure

■

Wet Rot

*

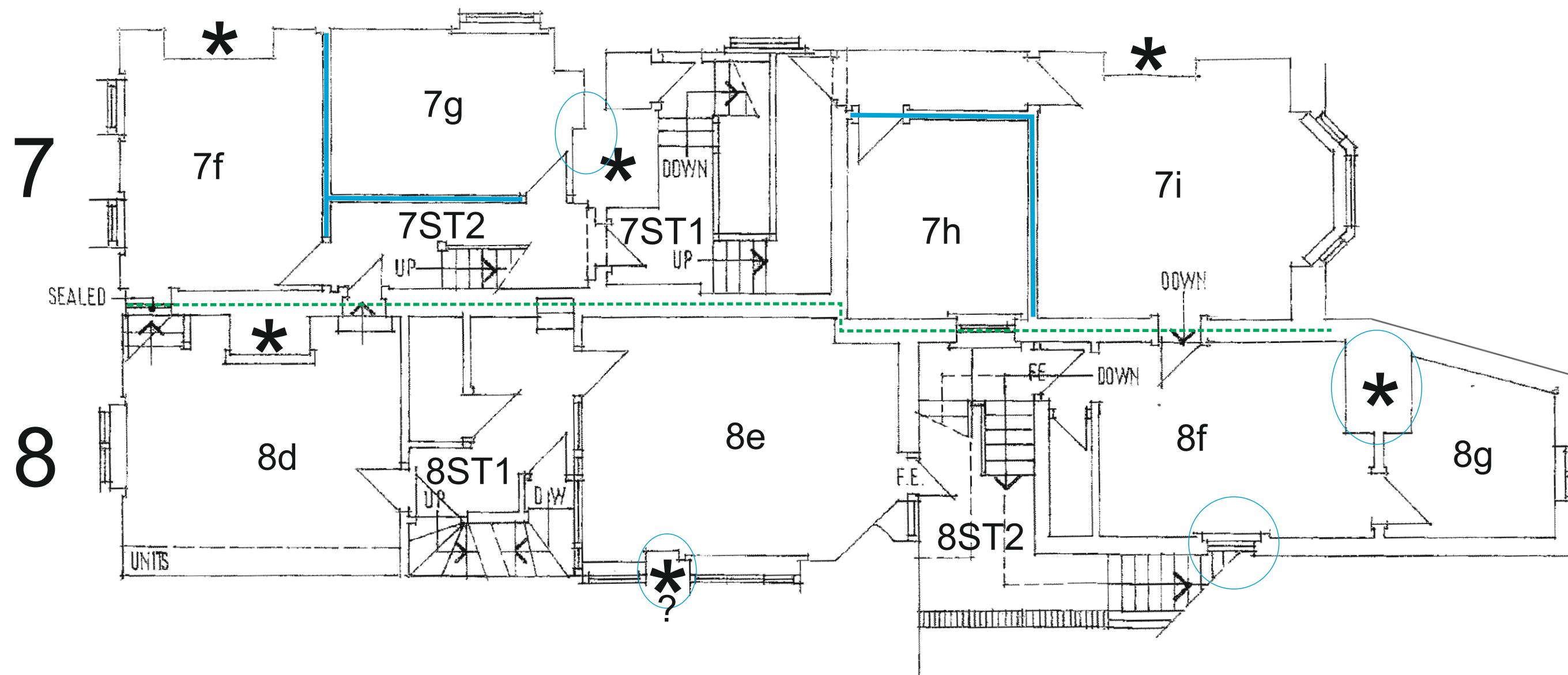
Fireplace

—

Modern Structure

○

Damp



FIRST FLOOR PLAN.
SCALE 1:100

